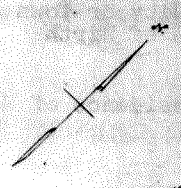
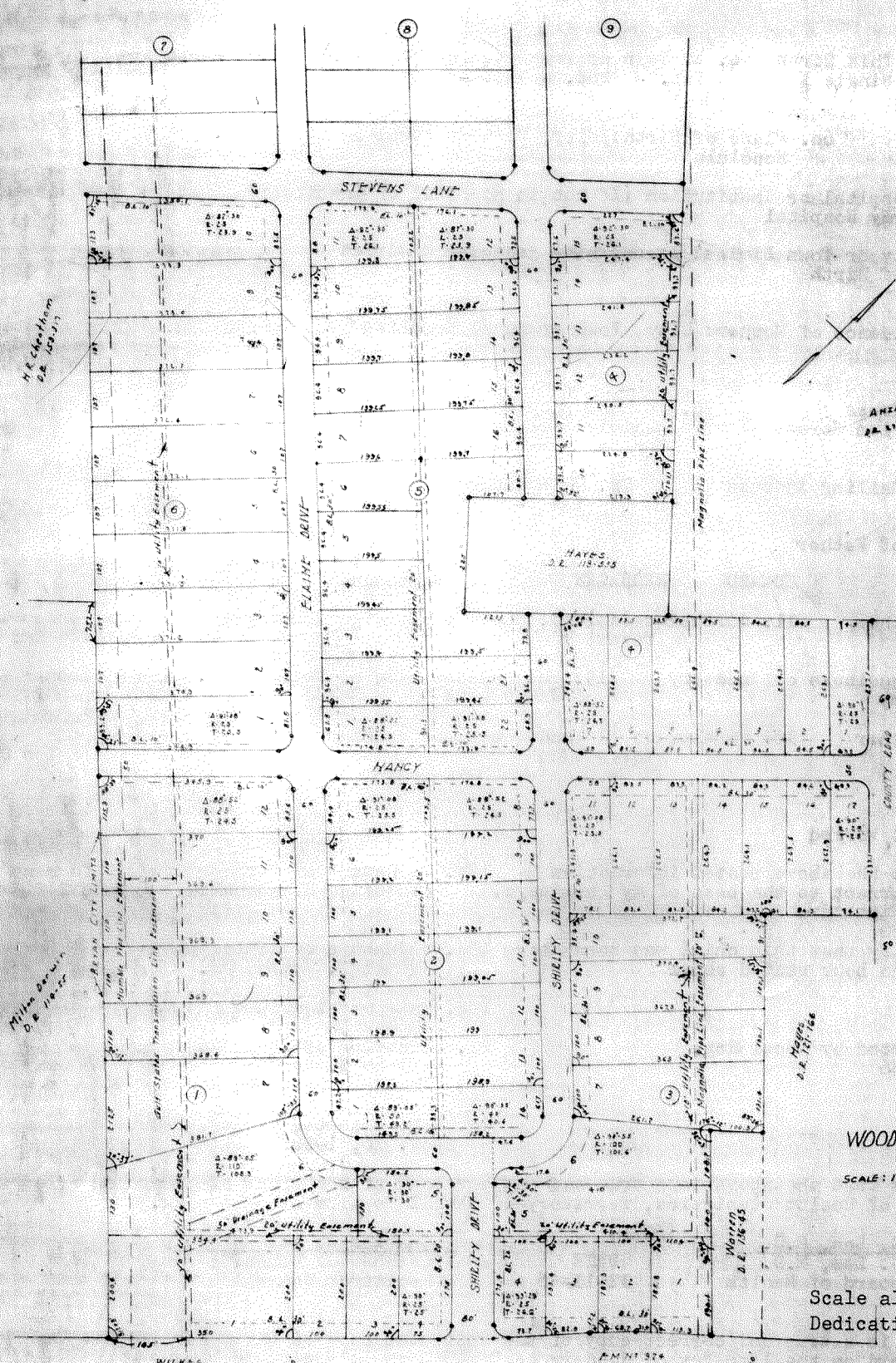


176/123 Plat



ANNEALING
 A.D. 811-845 + 35-147

CERTIFICATE OF APPROVAL
 I, Joe P. Brown
 Chairman of the City Planning & Zoning Commission of the City of Green Bay, Wisconsin, do hereby certify that the plat hereon is a true and correct copy of the original plat filed for record with the City Planning & Zoning Commission of the City of Green Bay on the 30th day of August, A.D. 1956, and same was duly approved on the 17th day of September, A.D. 1956, by said Commission.
Joe P. Brown
 Chairman, City Planning & Zoning Commission
 Green Bay, Wis.

In the County Clerk of Green Bay, Wis.:
 Under Order of the City of Green Bay, the approval of this plat by the City Planning & Zoning Commission is hereby recorded and placed in the 30th day of August, 1956, and when this plat is presented for filing on or before said date it shall not be returned for filing.
 City Planning & Zoning Commission
Joe P. Brown
 Chairman

Note: C.L. designates
 Building Line

UNIT No. 1
 OF
 WOODVILLE ACRES No. 3
 SCALE: 1" = 100' Sheet 1 of 2

Scale altered by photography
 Dedication on page 119 in Vol. 17

Developer: H. R. Cheatham

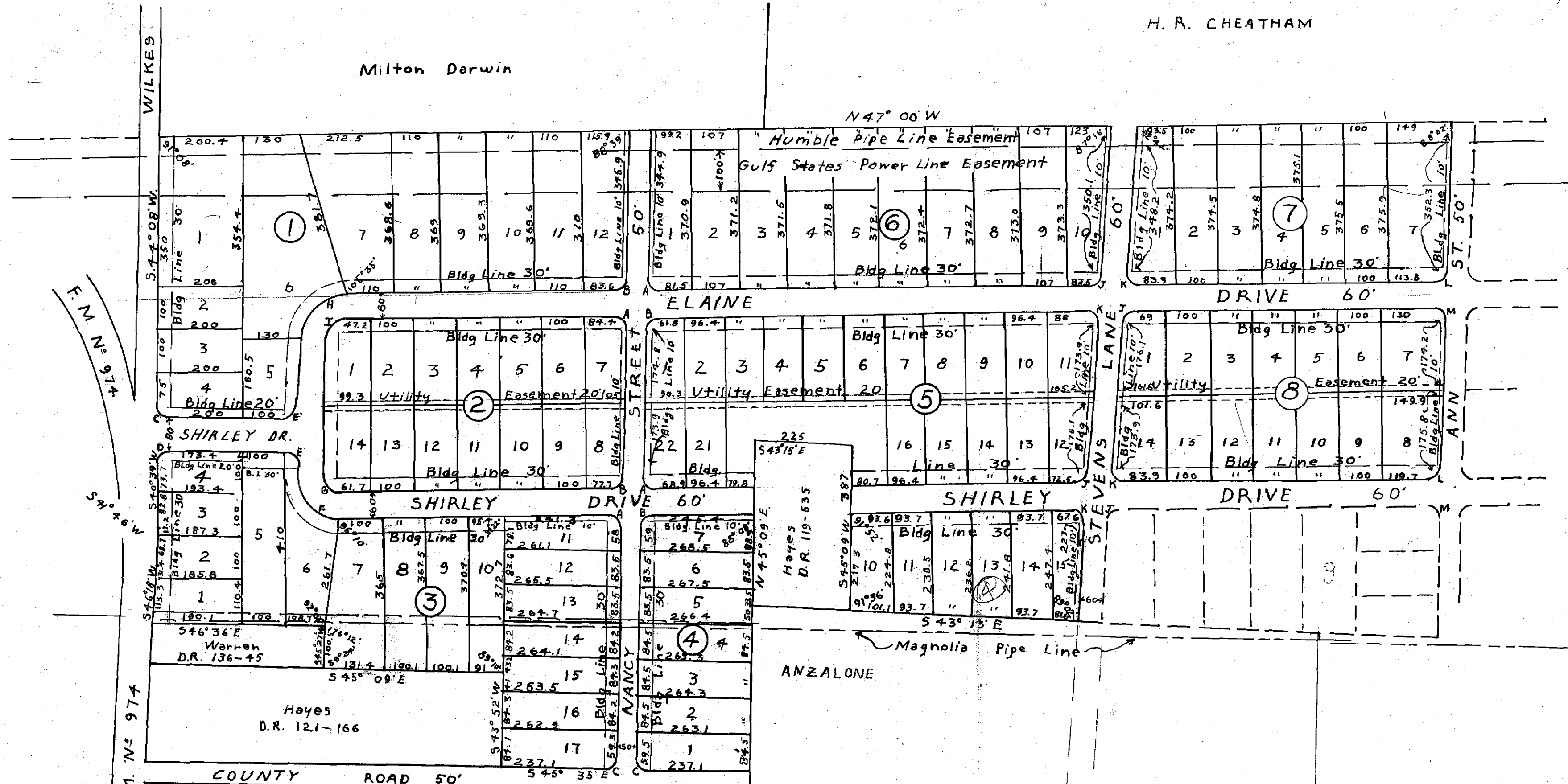
The foregoing is a true and correct copy of the original plat filed for record on the 30th day of August, A. D. 1956 and duly recorded on the 17th day of September, A. D. 1956 at 10:45 a.m. o'clock to which I certify.

A. B. Syptak, C. C. C. B. S.

PLAT FROM COURTHOUSE

H. R. CHEATHAM

Milton Darwin



CURVE DATA			
Curve	Tangent	Delta	Radius
A	25.5	91°08'	25.0
B	24.5	88°52'	25.0
C	25.0	90°00'	25.0
D	26.6	93°29'	25.0
E	30.0	90°00'	30.0
F	101.6	90°55'	100.0
G	40.6	90°55'	40.0
H	108.3	89°05'	110.0
I	49.2	89°05'	50.0
J	23.9	87°30'	25.0
K	26.1	92°30'	25.0
L	24.2	88°16'	25.0
M	25.8	91°44'	25.0

WOODVILLE ACRES No 3

156.4 AC. IN MOSES BAINE AND S.F. AUSTIN No 10

SCALE: 1" = 200'

176-12 JUNE 1956

D.R.: VOL. 180, PG. 83

DEVELOPER: H. R. CHEATHAM

176/121

405

PLAT FROM CITY OF BRYAN RECORDS